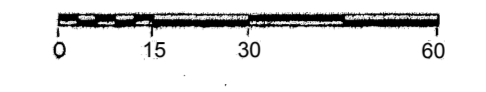


SCALE: 1" = 30'
(IN FEET)



LEGEND (DEC. 1991)

- Q MANHOLE
- W CATCH BASIN
- ⊙ LAMP POLE
- × SET NAIL/FLAGGING

BASIS OF BEARINGS

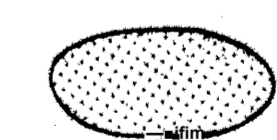
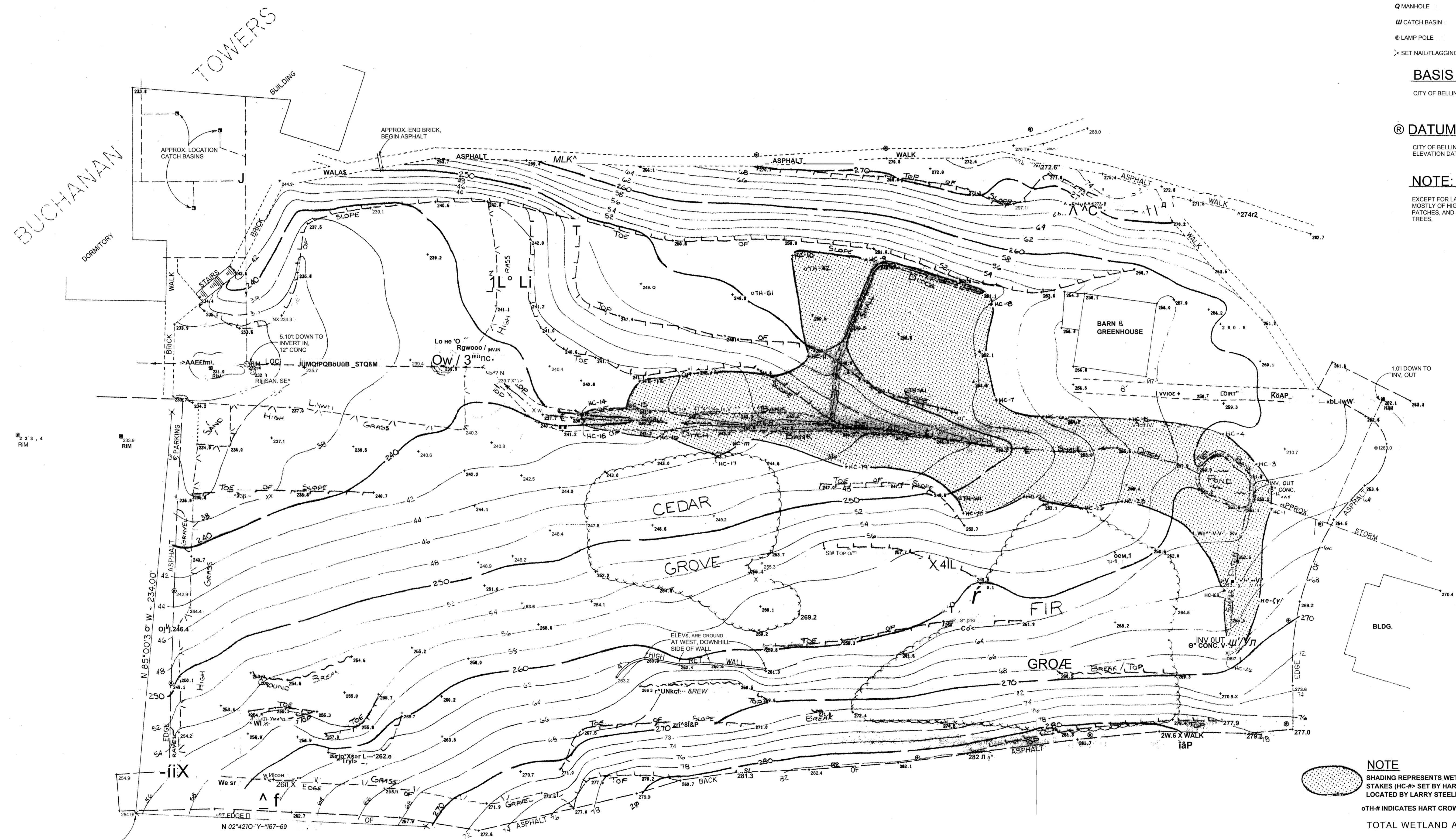
CITY OF BELLINGHAM CADASTRAL SURVEY OF 1973.

DATUM:

CITY OF BELLINGHAM
ELEVATION DATUM.

NOTE:

EXCEPT FOR LAWN AND GROVES, AREA IS COMPRISED MOSTLY OF HIGH GRASS, DENSE BLACKBERRY PATCHES, AND OCCASIONAL SMALLER DECIDUOUS TREES.



NOTE
SHADING REPRESENTS WETLAND BOUNDARY DELINEATED WITH STAKES (HC-#) SET BY HART CROWSER INC. AND LOCATED BY LARRY STEELE & ASSOC. INC. ON FEB. 17, 1994.
OTH-# INDICATES HART CROWSER TEST HOLE
TOTAL WETLAND AREA = 0.64 ACRES

BEARING & DISTANCE TO W.W.U. CONTROL MONUMENT 60V. LOCATED AT INTERSECTION OF So. COLLEGE DR. & E. COLLEGE WAY, IS N 17°57'31" W - 1606.50'

G5SOI
"BUCHANAN TOWERS"

TOPOGRAPHY

	SCALE: 1" = 30" DATE: 1/7/92	APPROVED BY: WETLAND BCM FB 491/34 LWS FB 491/21	DRAWN BY: KLA,PJM REVISED: 3/11/94
	WESTERN WASHINGTON UNIVERSITY FACILITIES AND MASTER PLANNING PORTION OF THE SW 1/4, NW 1/4, SEC. 6, T. 37N., R. 3E., N.W.P. CITY OF BELLINGHAM, WHATCOM COUNTY, WASHINGTON		DRAWING NUMBER #27491.2